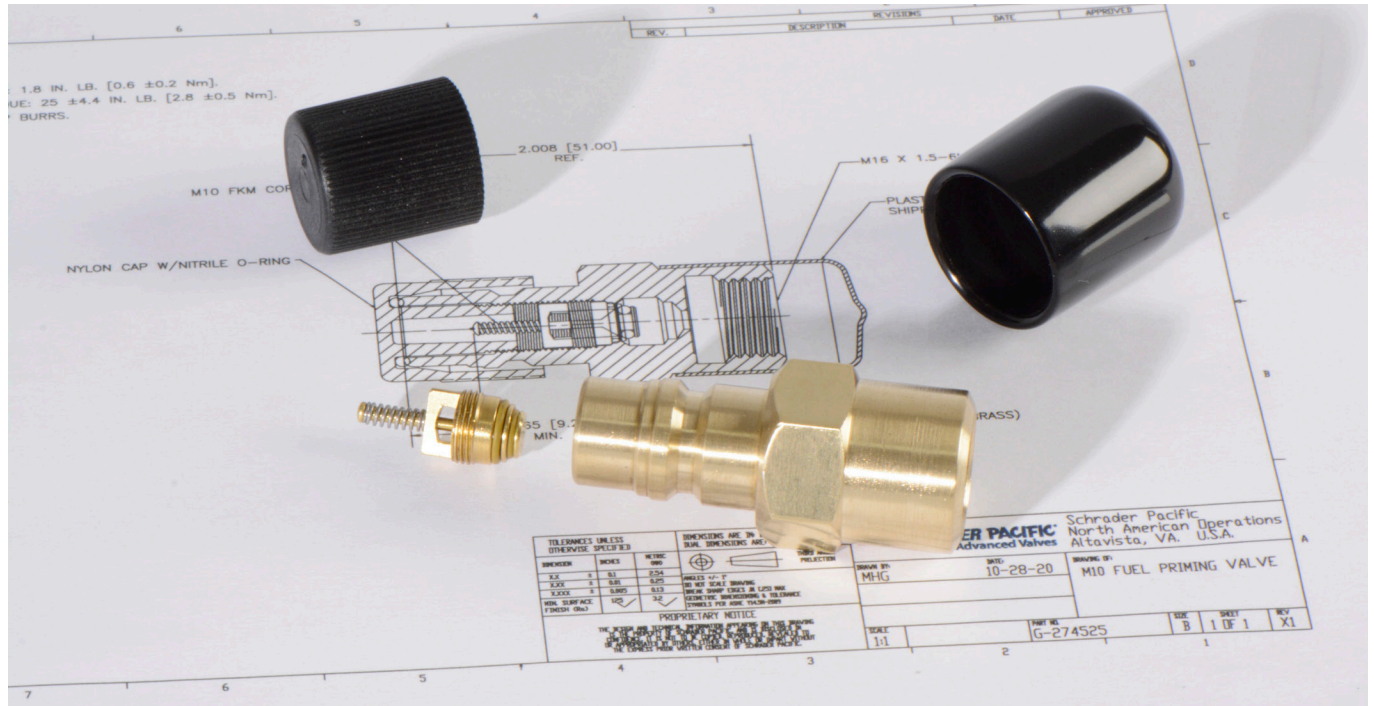


# Diesel Hi-Flow Priming Valve

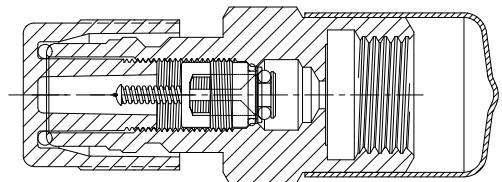
Designed for use as a Diesel Fuel System Charge Valve



## Diesel Priming Valve with M10 Core

Schrader-Pacific's high flow 10 mm core has been used in a variety of "priming" application where high flow and fast cycle time are needed. This valve offers significant flow advantages over smaller 8 mm core versions. Schrader-Pacific is unique with the most widely used 10 mm core on the market both for AC and fuel applications.

Our priming valve is designed to introduce diesel fuel to the engine for initial start-up (at the assembly plant) or at the dealer when servicing. The assembly uses a brass housing and M10 core with FKM seal to quickly fill the system with fuel at the engine; it introduces fuel in place of air at the injectors so that the engine will start.



205 Frazier Road • Altavista, Virginia 24517 • 1.800.345.0578 • Schrader-Pacific.com